

Brad Umfress, PT, MS



Emily Craigen, PT, DPT



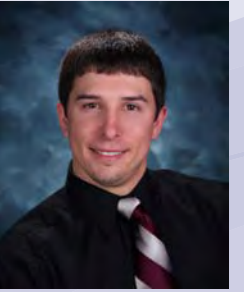
Erin Norberg, PT, DPT



Heidi Peszat, PTA



Jen Orth, ATC/L



Josh Howard, PT, MPT



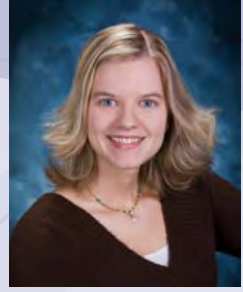
Justin Fedie, PT, MPT



Karen Tenuta, PT



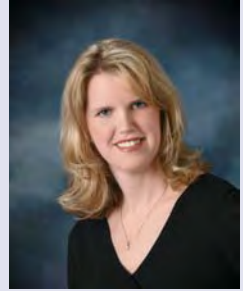
Tracie Vidas, PTA



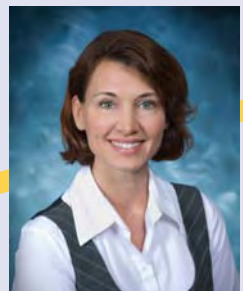
Tina Sowinski, OTR/L, CLT



Tim Shirk, PTA



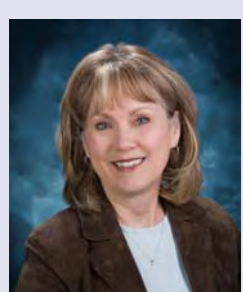
Tara Grocholski, PT



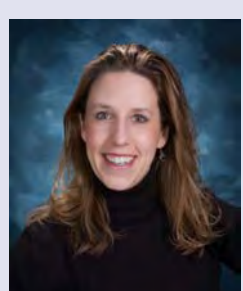
Tammy Baruth, PT



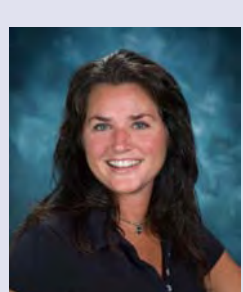
Susan Gergas, PTA



Susan Farley, PT, MS



Shannon Arrieta, PT, MPT



Sandra Zach, PTA



Rachel Carranza, PTA

Celebrating 17 years! One County



Sports Physical Therapy & Rehab Specialists, S.C.
Restoring Human Performance
866 REHAB ME www.sptrs.com

One Choice Est. April 1992



Kathy Segerstrom, PTA



Katie Schneider, PT, DPT



Kevin Leiseberg, PT, MSPT



Kim Puma, PTA



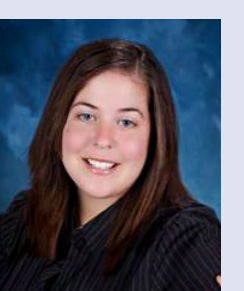
Kim Schmitt, PT, MPT



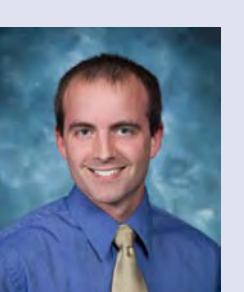
Kristie Thomas, PT, DPT



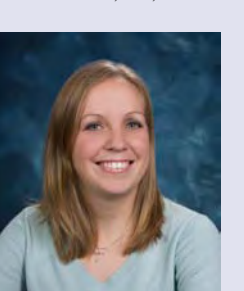
Kristin Seffern, PT, MPT



Luisa Montemurro, PT, DPT



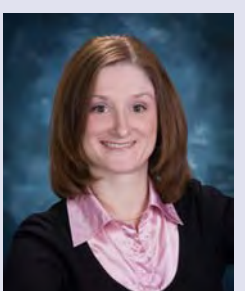
Luke Kunze, PT, MPT



Maggie Moraw, OTR/L



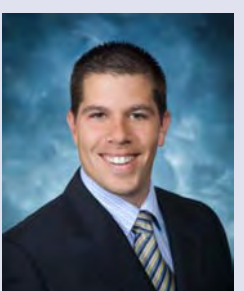
Johnny Passarelli, PT, MPT
VP Kenosha Region



Jen Montemurro, PT, MPT
VP Kenosha Region



Paul Schmidt, PT, MPT
VP Kenosha County Region



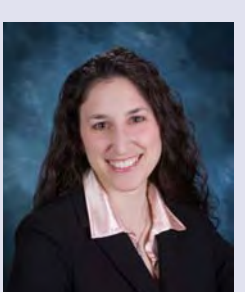
Bryan Welder, PT, MPT
VP Illinois Region



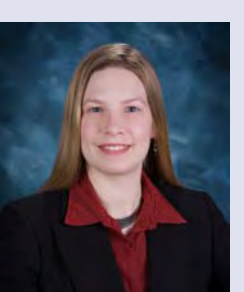
Dan Houglum, PT, MSPT



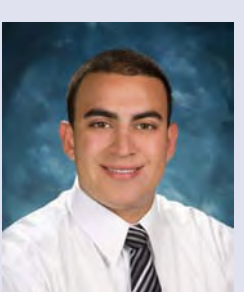
Carmelo D. Tenuta, PT
Founder/President



Michelle Paulowske, OTR/L
Director of Industrial Rehab
& Assessment Services



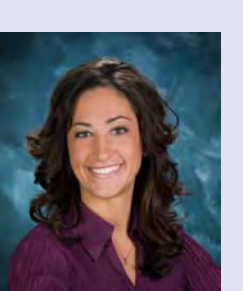
Joan Korpi, OTR/L
Manager of Industrial Rehab
& Assessment Services



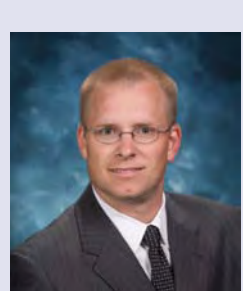
Christian Venegas, ATC/L
Industrial Rehab Specialist



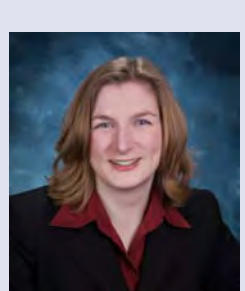
Lane LaClair, PT, DPT



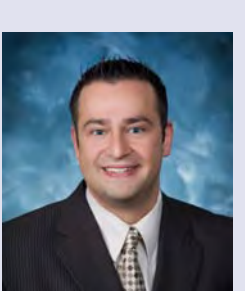
Nikki Swikert, OTR/L, CLT



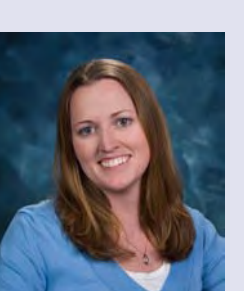
Mike Leitza, PT



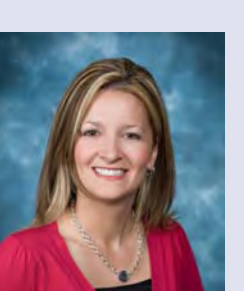
Michelle Baumeister, OTR/L, CHT



Matthew Oleksy, PT, DPT



Mary Kyle, PT, DPT



Marisa Trottier, PT, DPT

- Physical Therapy
- Occupational Therapy
- Industrial Rehabilitation
- Work Hardening & Conditioning
- Balance & Wellness
- Lymphedema
- Certified Hand Therapy